

# Clackamas County Forest Investment Strategy

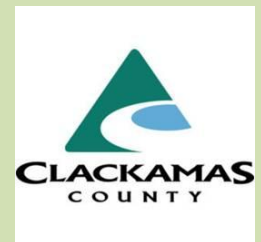


*An Overview to CCBA  
June 12, 2013*

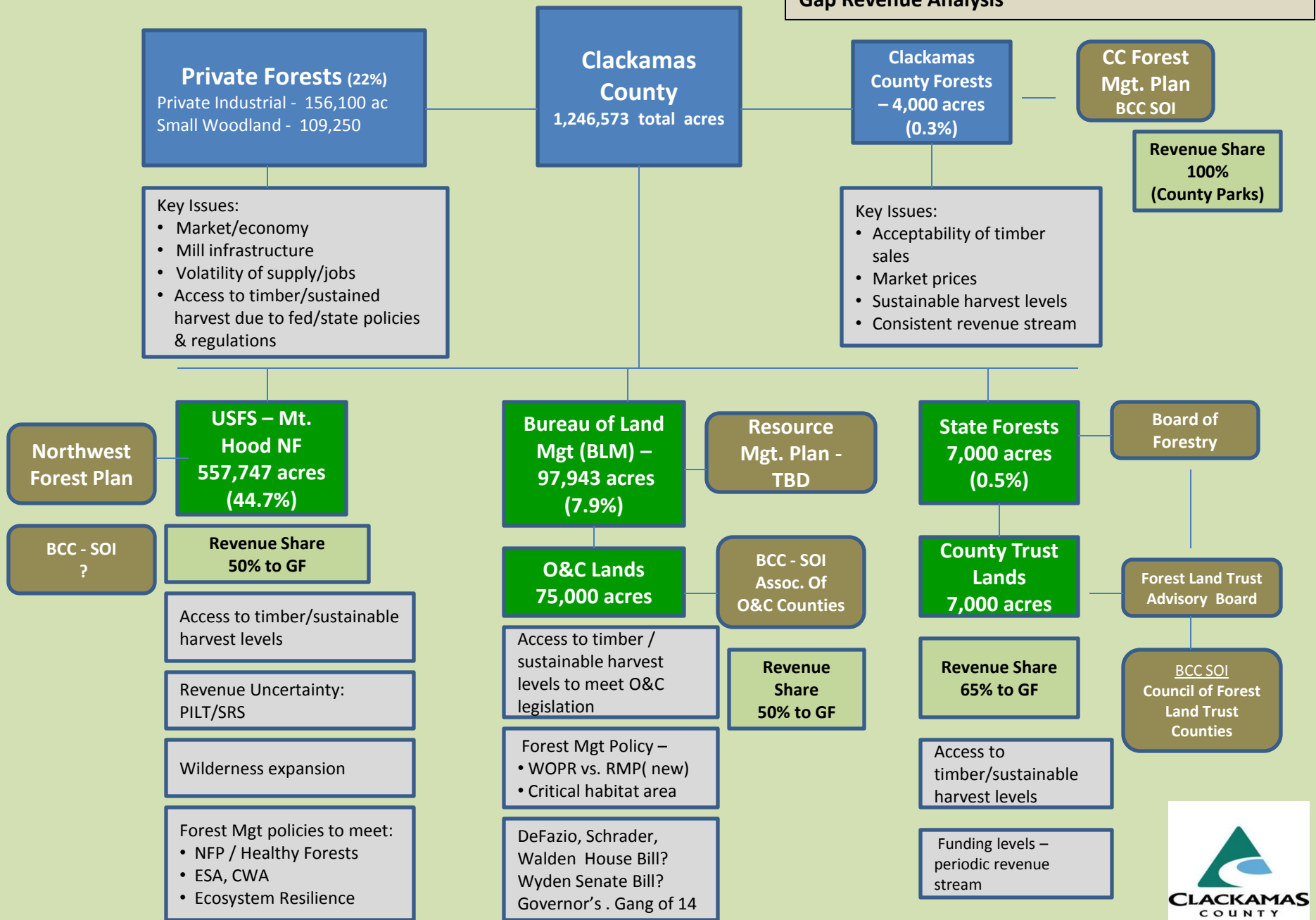
Rick Gruen, Ag & Forest Economic Development Program Manager  
503.742.4345; [rgruen@clackamas.us](mailto:rgruen@clackamas.us)

**Clackamas County Forest Land Area / By Ownership**

Land Type	Acres		%
<b>County Total</b>	<b>1,205,683</b>		<b>100</b>
<b>All Forest Land</b>		<b>918,465</b>	<b>76.2</b>
<b>All Other land</b>		<b>287,218</b>	<b>23.8</b>
<b>Public Land Total</b>	<b>653,115</b>		<b>54.2</b>
<b>USFS</b>		<b>545,040</b>	
<b>BLM</b>		<b>75,600</b>	
<b>State Forest</b>		<b>7,150</b>	
<b>County</b>		<b>4,115</b>	
<b>Metro</b>		<b>2,800</b>	
<b>Tribal</b>		<b>13,700</b>	
<b>Other</b>		<b>4,700</b>	
<b>Private Forestland</b>	<b>265,350</b>		<b>22.0</b>
<b>Private Industrial</b>		<b>156,100</b>	
<b>Private/Woodland</b>		<b>109,250</b>	



# Clackamas County Forestland Issues, Ownership and Gap Revenue Analysis



**Gap Revenue Analysis:**

Clackamas County provides active management on 3,000 acres of its 4,000 acre forest lands under a 55 acre/55 year + rotation system or approximately 1.8% of total acres sustainably harvested each year (annual growth).

•55 acres annual harvest yields approximately **2.5mmbf = \$750,000** gross revenue (100% to county)

•**State Forestland:** approximately 7,000 acres of state forestland lands within the county

Current DOF revenue projection for:

FY 2013 - \$650,000 (county share)
FY 2014 - \$ 67,000
FY 2015 - \$217,000
FY 2016 - \$337,000
FY 2017 - \$375,000

**If we apply the same harvest acre equivalent to state forest lands in Clackamas County:**

- 1.8% of 7,000 acres = 126 acres annually harvested
- 126 acres yields approximately **5.7 mmbf = \$1.72 million** gross revenue
- 65% return to County = **\$1.12 million**

•**O&C Forestland** – approximately 75,000 acres of BLM managed O&C lands within the county:

History of O&C Revenue to Clackamas County

<u>Period</u>	<u>Annual Harvest level (MMBF)</u>	<u>County Revenue Share</u>	<u>Comments</u>
1980's	32.64 mmbf (avg.)	\$8.0 million	Prior to NW Forest Plan
1994-2000	6.5 mmbf (avg.)	\$1.63 million	Spotted Owl Period leading to SRS funding
2007	7.8 mmbf	\$6.1 million	SRS payment to county trend
2008	5.2 mmbf	\$5.8 million	" "
2009	3.0 mmbf	\$5.2 million	" "
2010	4.0 mmbf	\$4.7 million	" "
2011		\$1.2 million	" "
2012		\$1.2 million	

**If we apply the same harvest acre equivalent to O&C forest lands in Clackamas County:**

- 1.8% of 75,000 acres = 1,350 acres annually harvested
- 1,350 acres yields approximately **61.36 mmbf = \$18.40 million** gross revenue
- 50% return to County = **\$9.2 million**

